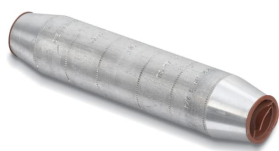


PRODUCT-DETAILS

ATC 300

AL TAPERED SPLICE CONCENTRIC 300



General Information

Extended Product Type	ATC 300
Product ID	7TAA262050R0194
EAN	0783786697274
Catalog Description	AL TAPERED SPLICE CONCENTRIC 300
Long Description	Aluminum Tapered Splices, 300 kcmil AL-CU, installing dies 1, TH, 87H, 470, 251, 12A. Length 4-5/16 inch. Outside Diameter 1 inch. Oil Stop. Oxide Inhibitor. Blue Caps.

Ordering

EAN	0783786697274
UPC	783786697274
Country of Origin	United States (US)
Customs Tariff Number	8536904000
Selling Unit of Measure	each

Container Information

Package Level 1 Units	25 piece
Package Level 1 Width	1 in 25 mm
Package Level 1 Height	1 in 25 mm
Package Level 1 Depth / Length	1 in 25 mm

Additional Information

Effective Date	20080619
Number of Batteries	0
Product Name	ELECTRICAL SPLICE<1000V

Certificates and Declarations (Document Number)

Data Sheet, Technical Information	ATC 300
Instructions and Manuals	ATC 300

Classifications

UNSPSC	39121449
WEEE Category	Product Not in WEEE Scope
IDEA Granular Category Code (IGCC)	4669 >> Wire or cable compression splice

Categories

Low Voltage Products and Systems → Installation Products → Cable Accessories and Apparatus → Distribution Connectors

