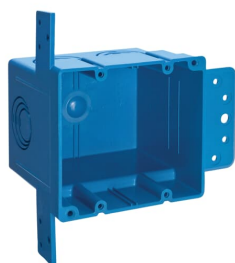


PRODUCT-DETAILS

A238-CAR

2 GANG/4 IN SQUARE ENT OUTLET BOX



General Information

Extended Product Type	A238-CAR
Product ID	7TAA234980R0010
EAN	0034481188896
Catalog Description	2 GANG/4 IN SQUARE ENT OUTLET BOX
Long Description	Two Gang Outlet Box, Volume 38 Cubic Inches, Length 3.844 Inches, Width 3.53 Inches, Depth 3.45 Inches, Number of Knockout 5, Knockout Size 1/2 Inch, 3/4 Inch, and 1 Inch, Color Blue, Material PVC, Pack of 5

Ordering

EAN	0034481188896
UPC	034481188896
Country of Origin	United States (US)
Customs Tariff Number	3926909985
Selling Unit of Measure	each

Container Information

Package Level 1 Units	5 piece
Package Level 1 Width	6.2 in 157 mm
Package Level 1 Height	7.98 in 203 mm
Package Level 1 Depth /	19.9 in

Length	505 mm
Package Level 2 Units	560 piece
Package Level 2 Width	40 in 1016 mm
Package Level 2 Height	50.5 in 1283 mm
Package Level 2 Depth / Length	48 in 1219 mm

Additional Information

Application	Designed to allow selective ENT openings - 1/2 in., 3/4 in., and 1 in. - based on application needs.
Brand / Label	Carlton
Effective Date	20080116
Number of Batteries	0
Product Name	PLASTIC ELEC BOX W/O CONDUCTOR
Product Type	ENT Flexible Raceway
Special Functions	Provide the largest capacity available in the market today - 22 cu.in. single gang, and 38 cu.in. double gang.
Standards	UL E86720

Certificates and Declarations (Document Number)

Data Sheet, Technical Information	A238-CAR
Instructions and Manuals	A238-CAR

Classifications

ETIM 6	EC002601 - Box/housing for built-in mounting in the wall/ceiling
ETIM 7	EC002601 - Box/housing for built-in mounting in the wall/ceiling
ETIM 8	EC002601 - Box/housing for built-in mounting in the wall/ceiling
UNSPSC	39131709
WEEE Category	Product Not in WEEE Scope
IDEA Granular Category Code (IGCC)	5570 >> Electrical wire or cable raceway

Categories

Low Voltage Products and Systems → Installation Products → Wire Management and Connectivity → Commercial Fittings

