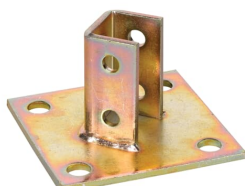


PRODUCT-DETAILS

AP 232 WH

DIAG POST BASE CONN HT 3-1/2IN STL



General Information

Extended Product Type	AP 232 WH
Product ID	7TAA005980R0297
EAN	0616013026571
Catalog Description	DIAG POST BASE CONN HT 3-1/2IN STL
Long Description	Connector, Diagonal Post Base, Post Height 3-1/2 Inches, Post Length 1-11/16 Inch, Width 1-5/8 Inch, 4 Holes, Hole Diameter 3/4 Inch, White Powder Coated Steel

Ordering

EAN	0616013026571
UPC	616013026571
Country of Origin	United States (US)
Customs Tariff Number	7326908588
Selling Unit of Measure	each

Container Information

Package Level 1 Units	10 piece
Package Level 1 Width	10.5 in 267 mm
Package Level 1 Height	5.2 in 132 mm
Package Level 1 Depth / Length	14.8 in 376 mm

Additional Information

Brand / Label	Superstrut
Effective Date	19950825
Material	Steel
Number of Batteries	0
Product Name	SUPERSTRUT CHANNEL & ACCES
Surface Finishing	White Powder Coated

Certificates and Declarations (Document Number)

Data Sheet, Technical Information	AP 232 WH
Instructions and Manuals	AP 232 WH

Classifications

ETIM 6	EC000482 - Mounting element for support/profile rail
ETIM 7	EC000482 - Mounting element for support/profile rail
ETIM 8	EC000482 - Fastening element for mounting rail/-profile
UNSPSC	31162502
WEEE Category	Product Not in WEEE Scope
IDEA Granular Category Code (IGCC)	3010 >> Angle brackets

Categories

Low Voltage Products and Systems → Installation Products → Wire Management and Connectivity → Metal Framing & Accessories

