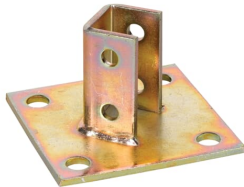


PRODUCT-DETAILS

AP232 PVC

PVC FINISH POST BASES



General Information

Extended Product Type	AP232 PVC
Product ID	7TAA005840R0002
EAN	0616013013427
Catalog Description	PVC FINISH POST BASES
Long Description	Corner Post Base. Base Plate 6 Inch X 6 Inch with (4) 3/4 Inch Diameter Holes in corners. Attached to Bracket 3-1/2 Inch Tall, Depth 1-11/16 Inch, Width 1-5/8 Inch with 2 holes on all 3 sides. PVC Finish Coating.

Ordering

EAN	0616013013427
UPC	616013013427
Country of Origin	United States (US)
Customs Tariff Number	0000000000
Selling Unit of Measure	each

Dimensions

Product Net Height	3-1/2 in
--------------------	----------

Container Information

Package Level 1 Units	10 piece
-----------------------	----------

Package Level 1 Width	10.5 in 267 mm
Package Level 1 Height	5.2 in 132 mm
Package Level 1 Depth / Length	14.8 in 376 mm

Additional Information

Brand / Label	Superstrut
Effective Date	19940309
Material	Steel
Number of Batteries	0
Product Name	SUPERSTRUT CHANNEL & ACCES
Surface Finishing	PVC Coated

Certificates and Declarations (Document Number)

Data Sheet, Technical Information	AP232 PVC
Instructions and Manuals	AP232 PVC

Classifications

ETIM 6	EC000482 - Mounting element for support/profile rail
ETIM 7	EC000482 - Mounting element for support/profile rail
ETIM 8	EC000482 - Fastening element for mounting rail/-profile
UNSPSC	31162502
WEEE Category	Product Not in WEEE Scope
IDEA Granular Category Code (IGCC)	3010 >> Angle brackets

Categories

Low Voltage Products and Systems → Installation Products → Wire Management and Connectivity → Metal Framing & Accessories

