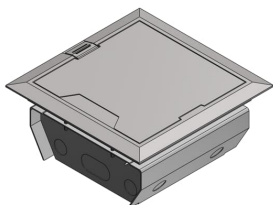


PRODUCT-DETAILS

# AFM-4-ALM-N

## AFM-4 ALUMINUM CVR SWING ARM INTEL



### General Information

Extended Product Type	AFM-4-ALM-N
Product ID	7TAA003320R0075
EAN	0785991078404
Catalog Description	AFM-4 ALUMINUM CVR SWING ARM INTEL
Long Description	Galvanized Steel Delivery Module with Swing Arms - Intel. Includes Solid Aluminum Cover, panel and power receptable face plate. 150 Cubic Inch Capacity.

### Ordering

EAN	0785991078404
UPC	785991078404
Country of Origin	United States (US)
Customs Tariff Number	7326908588
Selling Unit of Measure	each

### Container Information

Package Level 1 Units	1 piece
Package Level 1 Width	9.63 in 245 mm
Package Level 1 Height	4.75 in 121 mm
Package Level 1 Depth / Length	9.63 in 245 mm

**Additional Information**

Brand / Label	Steel City
Cable Entry Position	Knockouts
Effective Date	20140922
Material	Steel
Number of Batteries	0
Number of Knockouts	8
Product Name	STEEL BOX
Size	9.29 Inches x 9.29 Inches x 4.20 Inches
Volume	150 in <sup>3</sup>

**Certificates and Declarations (Document Number)**

Data Sheet, Technical Information	AFM-4-ALM-N
Instructions and Manuals	AFM-4-ALM-N

**Classifications**

ETIM 6	EC001906 - Mounting cover for underfloor draw-in box
ETIM 7	EC001906 - Mounting cover for underfloor draw-in box
ETIM 8	EC001906 - Mounting cover for underfloor draw-in box
UNSPSC	39121307
WEEE Category	Product Not in WEEE Scope
IDEA Granular Category Code (IGCC)	4432 >> Floor boxes

**Categories**

Low Voltage Products and Systems → Installation Products → Wire Management and Connectivity → Electrical Boxes

