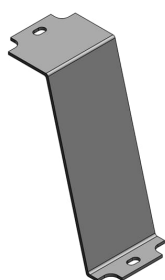


PRODUCT-DETAILS

AFP 8B

AFM CVR BLANK SLOPED 45DEG STL



General Information

| | |
|-----------------------|--|
| Extended Product Type | AFP 8B |
| Product ID | 7TAA003320R0058 |
| EAN | 0785991900705 |
| Catalog Description | AFM CVR BLANK SLOPED 45DEG STL |
| Long Description | Access Floor Module Cover, Length 4-17/64 Inches, Galvanized Steel, Blank Cover Sloped 45 Degrees, Power Panel |

Ordering

| | |
|-------------------------|--------------------|
| EAN | 0785991900705 |
| UPC | 785991900705 |
| Country of Origin | United States (US) |
| Customs Tariff Number | 7326908688 |
| Selling Unit of Measure | each |

Container Information

| | |
|--------------------------------|------------------|
| Package Level 1 Units | 10 piece |
| Package Level 1 Width | 6 in 152 mm |
| Package Level 1 Height | 3.2 in 81 mm |
| Package Level 1 Depth / Length | 6.1 in 155 mm |

Package Level 2 Units

7280 piece

Additional Information

| | |
|---------------------|---------------------------|
| Application | For use with AFM-8 series |
| Brand / Label | Steel City |
| Effective Date | 19910618 |
| Material | Steel |
| Number of Batteries | 0 |
| Number of Knockouts | 0 |
| Product Name | STEEL CITY FLOOR BOXES |
| Product Type | Access Floor Modules |
| Standards | UL E75944 |

Certificates and Declarations (Document Number)

| | |
|-----------------------------------|--------|
| Data Sheet, Technical Information | AFP 8B |
| Instructions and Manuals | AFP 8B |

Classifications

| | |
|------------------------------------|---|
| ETIM 6 | EC000006 - Cover plate for installation units |
| ETIM 7 | EC000006 - Cover plate for installation units |
| ETIM 8 | EC000006 - Cover plate for installation units |
| UNSPSC | 39121307 |
| WEEE Category | Product Not in WEEE Scope |
| IDEA Granular Category Code (IGCC) | 4432 >> Floor boxes |

Categories

Low Voltage Products and Systems → Installation Products → Wire Management and Connectivity → Electrical Boxes

