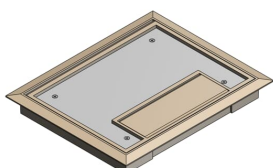


PRODUCT-DETAILS

AFM6-CST-SW-BGE

SCRUBWATER AFM6 COVER - BGE



General Information

Extended Product Type	AFM6-CST-SW-BGE
Product ID	7TAA003320R0044
EAN	0785991032918
Catalog Description	SCRUBWATER AFM6 COVER - BGE
Long Description	Non-metallic MopTite floor box cover with steel reinforced plate and beige flange.

Ordering

EAN	0785991032918
UPC	785991032918
Country of Origin	United States (US)
Customs Tariff Number	3926909985
Selling Unit of Measure	each

Container Information

Package Level 1 Units	1 piece
Package Level 1 Width	10 in 254 mm
Package Level 1 Height	1.5 in 38 mm
Package Level 1 Depth / Length	9.5 in 241 mm
Package Level 2 Units	4 piece

Package Level 2 Width	10.5 in 267 mm
Package Level 2 Height	8.75 in 222 mm
Package Level 2 Depth / Length	10 in 254 mm

Additional Information

Application	For use with AFM 6 series floor boxes
Brand / Label	Steel City
Effective Date	20031218
Material	Non-Metallic
Number of Batteries	0
Product Name	PLASTIC COVER
Product Type	Access Floor Modules
Special Functions	Factory installed gaskets reduce installation time
Standards	UL E2969

Certificates and Declarations (Document Number)

Data Sheet, Technical Information	AFM6-CST-SW-BGE
Instructions and Manuals	AFM6-CST-SW-BGE

Classifications

ETIM 6	EC001906 - Mounting cover for underfloor draw-in box
ETIM 7	EC001906 - Mounting cover for underfloor draw-in box
ETIM 8	EC001906 - Mounting cover for underfloor draw-in box
UNSPSC	39121307
WEEE Category	Product Not in WEEE Scope
IDEA Granular Category Code (IGCC)	4432 >> Floor boxes

Categories

Low Voltage Products and Systems → Installation Products → Wire Management and Connectivity → Electrical Boxes

