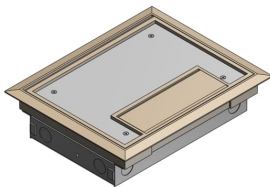


PRODUCT-DETAILS

# AFM-6S2-BGE

## NEW DESIGN AFM6S



### General Information

Extended Product Type	AFM-6S2-BGE
Product ID	7TAA003320R0039
EAN	0785991039849
Catalog Description	NEW DESIGN AFM6S
Long Description	Four Compartment Raised Access Floor Module, 172 Cubic Inches, Length 10 Inches, Width 7-15/16 Inches, Depth 2-1/2 Inches, Galvanized Steel with Beige Cover, Comes with Left and Right Power Panels and Wiring Tunnel

### Ordering

EAN	0785991039849
UPC	785991039849
Country of Origin	United States (US)
Customs Tariff Number	7326908688
Selling Unit of Measure	each

### Container Information

Package Level 1 Units	1 piece
-----------------------	---------

### Additional Information

Application	For use with most types of raised floors including ridged or waffled floor
-------------	--

	panels, carpet or tile
Brand / Label	Steel City
Effective Date	20050523
Material	Galvanized Steel
Number of Batteries	0
Product Name	ELECTRICAL STEEL BOX
Product Type	Access Floor Modules
Special Functions	Easy to install and designed to blend with any decor
Standards	UL E2969

---

### Certificates and Declarations (Document Number)

Data Sheet, Technical Information	AFM-6S2-BGE
Instructions and Manuals	AFM-6S2-BGE

---

### Classifications

ETIM 6	EC000024 - Installation box for underfloor-installation
ETIM 7	EC000024 - Installation box for underfloor-installation
ETIM 8	EC000024 - Installation box for underfloor-installation
UNSPSC	39121307
WEEE Category	Product Not in WEEE Scope
IDEA Granular Category Code (IGCC)	4432 >> Floor boxes

---

### Categories

Low Voltage Products and Systems → Installation Products → Wire Management and Connectivity → Electrical Boxes

