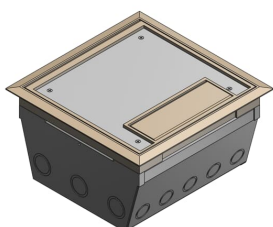


PRODUCT-DETAILS

AFM 8 BGE

10COMP RAISED ACC FLR-MOD 325CU BGE



General Information

Extended Product Type	AFM 8 BGE
Product ID	7TAA003320R0027
EAN	0785991900675
Catalog Description	10COMP RAISED ACC FLR-MOD 325CU BGE
Long Description	Ten Compartment Raised Access Floor Module, 325 Cubic Inches, Floor Cut Out Length 9-5/8 Inches, Width 9-5/8 Inches, Cover Size Length 9-3/8 Inches, Width 9-3/8 Inches, Depth 5-5/8 Inches, Galvanized Steel with Beige Cover

Ordering

EAN	0785991900675
UPC	785991900675
Country of Origin	United States (US)
Customs Tariff Number	0000000000
Selling Unit of Measure	each

Container Information

Package Level 1 Units	1 piece
-----------------------	---------

Additional Information

Application	Access floor modules can be used with most types of raised floors
-------------	-------------------------------------------------------------------

including ridged or waffled floor panels, carpet or tile

Brand / Label	Steel City
Effective Date	19910618
Material	Galvanized Steel
Number of Batteries	0
Product Name	STEEL CITY FLOOR BOXES
Product Type	Access Floor Modules
Special Functions	All power panels include one voltage partition to separate power and communications in adjacent compartments
Standards	UL E75944

Certificates and Declarations (Document Number)

Data Sheet, Technical Information	AFM 8 BGE
Instructions and Manuals	AFM 8 BGE

Classifications

ETIM 6	EC000024 - Installation box for underfloor-installation
ETIM 7	EC000024 - Installation box for underfloor-installation
ETIM 8	EC000024 - Installation box for underfloor-installation
UNSPSC	39121307
WEEE Category	Product Not in WEEE Scope
IDEA Granular Category Code (IGCC)	4432 >> Floor boxes

Categories

Low Voltage Products and Systems → Installation Products → Wire Management and Connectivity → Electrical Boxes

