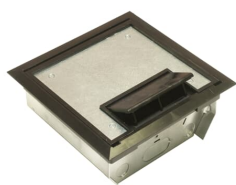


PRODUCT-DETAILS

# AFM-4-BLK

## GALV. STEEL FLOOR INSERTS



### General Information

Extended Product Type	AFM-4-BLK
Product ID	7TAA003310R0017
EAN	0785991018097
Catalog Description	GALV. STEEL FLOOR INSERTS
Long Description	Three Compartment Raised Access Floor Module, 150 Cubic Inches, Floor Cut Out Length 7-15/16 Inches, Width 7-15/16 Inches, Cover Size Length 7-5/8 Inches, Width 7-5/8 Inches, Depth 4 Inches, Galvanized Steel with Balck Cover

### Ordering

EAN	0785991018097
UPC	785991018097
Country of Origin	United States (US)
Customs Tariff Number	7326908588
Selling Unit of Measure	each

### Container Information

Package Level 1 Units	1 piece
Package Level 1 Width	11 in 279 mm
Package Level 1 Height	5 in 127 mm
Package Level 1 Depth /	13 in

Length	330 mm
Package Level 2 Units	60 piece

### Additional Information

Application	For use with most types of raised floors including ridged or waffled floor panels, carpet or tile
Brand / Label	Steel City
Color	Black
Effective Date	19931020
Material	Galvanized Steel
Number of Batteries	0
Number of Knockouts	8
Product Name	STEEL CITY FLOOR BOXES
Product Type	Access Floor Modules
Special Functions	Easy to install and designed to blend with any decor
Standards	UL E75944
Volume	150 in <sup>3</sup>

### Certificates and Declarations (Document Number)

Data Sheet, Technical Information	AFM-4-BLK
Instructions and Manuals	AFM-4-BLK

### Classifications

ETIM 6	EC000024 - Installation box for underfloor-installation
ETIM 7	EC000024 - Installation box for underfloor-installation
ETIM 8	EC000024 - Installation box for underfloor-installation
UNSPSC	39121307
WEEE Category	Product Not in WEEE Scope
IDEA Granular Category Code (IGCC)	4432 >> Floor boxes

### Categories

Low Voltage Products and Systems → Installation Products → Wire Management and Connectivity → Electrical Boxes

