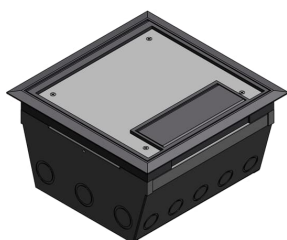


PRODUCT-DETAILS

AFM 8 GRY

10COMP RAISED ACC FLR-MOD 325CU GRY



General Information

| | |
|-----------------------|---|
| Extended Product Type | AFM 8 GRY |
| Product ID | 7TAA003310R0015 |
| EAN | 5415022253047 |
| Catalog Description | 10COMP RAISED ACC FLR-MOD 325CU GRY |
| Long Description | Ten Compartment Raised Access Floor Module, 325 Cubic Inches, Floor Cut Out Length 9-5/8 Inches, Width 9-5/8 Inches, Cover Size Length 9-3/8 Inches, Width 9-3/8 Inches, Depth 5-5/8 Inches, Galvanized Steel with Gray Cover |

Ordering

| | |
|-------------------------|--------------------|
| EAN | 5415022253047 |
| UPC | 785991900651 |
| Country of Origin | United States (US) |
| Customs Tariff Number | 7326908688 |
| Selling Unit of Measure | each |

Container Information

| | |
|-------------------------|-----------------|
| Package Level 1 Units | 1 piece |
| Package Level 1 Width | 13 in 330 mm |
| Package Level 1 Height | 6 in 152 mm |
| Package Level 1 Depth / | 16 in |

| | |
|-----------------------|----------|
| Length | 406 mm |
| Package Level 2 Units | 36 piece |

Additional Information

| | |
|---------------------|--|
| Application | Access floor modules can be used with most types of raised floors including ridged or waffled floor panels, carpet or tile |
| Brand / Label | Steel City |
| Color | Gray |
| Effective Date | 19910618 |
| Material | Galvanized Steel |
| Number of Batteries | 0 |
| Number of Knockouts | 16 |
| Product Name | STEEL CITY FLOOR BOXES |
| Product Type | Access Floor Modules |
| Special Functions | All power panels include one voltage partition to separate power and communications in adjacent compartments |
| Standards | UL E75944 |
| Volume | 325 in ³ |

Certificates and Declarations (Document Number)

| | |
|-----------------------------------|-----------|
| Data Sheet, Technical Information | AFM 8 GRY |
| Instructions and Manuals | AFM 8 GRY |

Classifications

| | |
|------------------------------------|---|
| ETIM 6 | EC000024 - Installation box for underfloor-installation |
| ETIM 7 | EC000024 - Installation box for underfloor-installation |
| ETIM 8 | EC000024 - Installation box for underfloor-installation |
| UNSPSC | 39121307 |
| WEEE Category | Product Not in WEEE Scope |
| IDEA Granular Category Code (IGCC) | 4432 >> Floor boxes |

Categories

Low Voltage Products and Systems → Installation Products → Wire Management and Connectivity → Electrical Boxes

