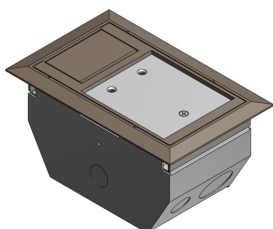


PRODUCT-DETAILS

AFM 2 BRN

2-COMPART AFM 75CU STL W/ BGE BRN



General Information

Extended Product Type	AFM 2 BRN
Product ID	7TAA003310R0007
EAN	0785991900019
Catalog Description	2-COMPART AFM 75CU STL W/ BGE BRN
Long Description	Two Compartment Raised Access Floor Module, 75 Cubic Inches, Floor Cut Out Length 7-1/8 Inches, Width 4-1/8 Inches, Cover Size Length 6-3/4 Inches, Width 3-7/8 Inches, Depth 4 Inches, Galvanized Steel with Brown Cover

Ordering

EAN	0785991900019
UPC	785991900019
Country of Origin	United States (US)
Customs Tariff Number	7326908688
Selling Unit of Measure	each

Container Information

Package Level 1 Units	4 piece
Package Level 1 Width	9.89 in 251 mm
Package Level 1 Height	9.2 in 234 mm
Package Level 1 Depth /	21.7 in

Length	551 mm
Package Level 2 Units	96 piece

Additional Information

Application	Access floor modules can be used with most types of raised floors including ridged or waffled floor panels, carpet or tile
Brand / Label	Steel City
Effective Date	19991027
Material	Galvanized Steel
Number of Batteries	0
Product Name	STEEL CITY FLOOR BOXES
Product Type	Access Floor Modules
Special Functions	Easy to install and designed to blend with any decor
Standards	UL E75944

Certificates and Declarations (Document Number)

Data Sheet, Technical Information	AFM 2 BRN
Instructions and Manuals	AFM 2 BRN

Classifications

ETIM 6	EC000024 - Installation box for underfloor-installation
ETIM 7	EC000024 - Installation box for underfloor-installation
ETIM 8	EC000024 - Installation box for underfloor-installation
UNSPSC	39121307
WEEE Category	Product Not in WEEE Scope
IDEA Granular Category Code (IGCC)	4432 >> Floor boxes

Categories

Low Voltage Products and Systems → Installation Products → Wire Management and Connectivity → Electrical Boxes

