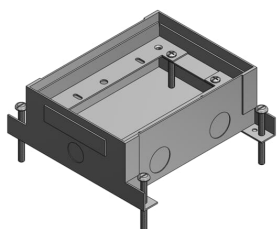


PRODUCT-DETAILS

742S

2-G SHALLOW FLUSH SVC FLR-BX 52CU



General Information

Extended Product Type	742S
Product ID	7TAA003250R0003
EAN	0785991118070
Catalog Description	2-G SHALLOW FLUSH SVC FLR-BX 52CU
Long Description	Two Gang Shallow Flush Service Floor Box, 52 Cubic Inches, Length 7-1/4 Inches, Width 5-1/2 Inches, Depth 2-5/8 Inches, 1/2 Inch 3/4 Inch and 1-1/4 Inch Knockouts, Galvanized Steel, For Power or Communications/Data

Ordering

EAN	0785991118070
UPC	785991118070
Country of Origin	United States (US)
Customs Tariff Number	7326908588
Selling Unit of Measure	each

Container Information

Package Level 1 Units	1 piece
Package Level 1 Width	8 in 203 mm
Package Level 1 Height	4 in 102 mm
Package Level 1 Depth /	8 in

Length	203 mm
Package Level 2 Units	80 piece

Additional Information

Application	Provides flush service for power, communications and data.
Brand / Label	Steel City
Effective Date	19970918
Material	Stamped Steel
Number of Batteries	0
Number of Knockouts	10
Product Name	STEEL CITY FLOOR BOXES
Product Type	Flush Service
Special Functions	16 ga.-pre-galvanized steel construction
Standards	UL E2969
Volume	52 in ³

Certificates and Declarations (Document Number)

Data Sheet, Technical Information	742S
Instructions and Manuals	742S

Classifications

ETIM 6	EC000024 - Installation box for underfloor-installation
ETIM 7	EC000024 - Installation box for underfloor-installation
ETIM 8	EC000024 - Installation box for underfloor-installation
UNSPSC	39121307
WEEE Category	Product Not in WEEE Scope
IDEA Granular Category Code (IGCC)	4432 >> Floor boxes

Categories

Low Voltage Products and Systems → Installation Products → Wire Management and Connectivity → Electrical Boxes

