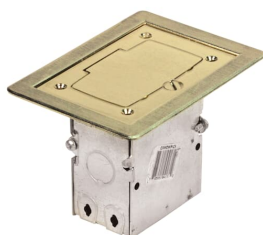


PRODUCT-DETAILS

71W-GFCI

RESI RECT 1G FLOOR BOX GFCI BRASS



General Information

Extended Product Type	71W-GFCI
Product ID	7TAA003240R0004
EAN	0785991039313
Catalog Description	RESI RECT 1G FLOOR BOX GFCI BRASS
Long Description	Single Gang Flush Service Residential Floor Box, 18 Cubic Inches, Length 3 Inches, Width 2 Inches, Depth 3-1/2 Inches, 1/2 Inch Knockouts, Galvanized Steel with Brass Cover, GFI Receptalce 15A 125V, Tamper Reistant, For Wood, Ceramic Tile, or Carpeted Floor Applications

Ordering

EAN	0785991039313
UPC	785991039313
Country of Origin	United States (US)
Customs Tariff Number	8536698000
Selling Unit of Measure	each

Container Information

Package Level 1 Units	1 piece
Package Level 1 Width	5.2 in 132 mm
Package Level 1 Height	3.8 in 97 mm

Package Level 1 Depth / Length	5.6 in 142 mm
Package Level 2 Units	4 piece
Package Level 2 Width	6.5 in 165 mm
Package Level 2 Height	12.3 in 312 mm
Package Level 2 Depth / Length	9.6 in 244 mm

Additional Information

Application	Ideal for use in residential market in wood floor applications
Brand / Label	Steel City
Effective Date	20050516
Material	Stamped Steel
Number of Batteries	0
Product Name	RECEPTACLE
Product Type	Flush Service
Special Functions	Residential floor box kit that includes a Steel City switch box, cover flange and receptacle.
Standards	UL E2969

Certificates and Declarations (Document Number)

Data Sheet, Technical Information	71W-GFCI
Instructions and Manuals	71W-GFCI

Classifications

ETIM 6	EC000024 - Installation box for underfloor-installation
ETIM 7	EC000024 - Installation box for underfloor-installation
ETIM 8	EC000024 - Installation box for underfloor-installation
UNSPSC	39121307
WEEE Category	Product Not in WEEE Scope
IDEA Granular Category Code (IGCC)	4432 >> Floor boxes

Categories

Low Voltage Products and Systems → Installation Products → Wire Management and Connectivity → Electrical Boxes

