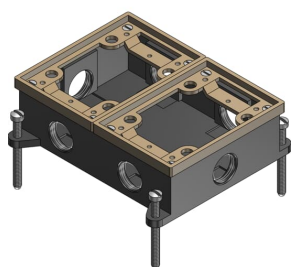


PRODUCT-DETAILS

842 SC

CAST IRON FLOOR BOX



General Information

Extended Product Type	842 SC
Product ID	7TAA003040R0008
EAN	0785991622201
Catalog Description	CAST IRON FLOOR BOX
Long Description	Two Gang Flush Service Floor Box, 33 Cubic Inches, Length 5-1/2 Inches, Width 7 Inches, Depth 2 Inches, 3/4 Inch Conduit Hubs, Cast Iron, For Power, Communications, and Data

Ordering

EAN	0785991622201
UPC	785991622201
Country of Origin	United States (US)
Customs Tariff Number	7326908588
Selling Unit of Measure	each

Container Information

Package Level 1 Units	1 piece
Package Level 2 Units	2 piece
Package Level 2 Width	6.6 in 168 mm
Package Level 2 Height	5.2 in 132 mm

Package Level 2 Depth /
Length

8.8 in
224 mm

Additional Information

Application	Ideal for the modern office with workstations that have power, communications and data equipment
Brand / Label	Steel City
Effective Date	19991027
Material	Cast Iron
Number of Batteries	0
Number of Knockouts	0
Product Name	STEEL BOX
Product Type	Flush Service
Special Functions	Fully adjustable
Standards	UL E2969
Volume	33 in ³

Certificates and Declarations (Document Number)

Data Sheet, Technical Information	842 SC
Instructions and Manuals	842 SC

Classifications

ETIM 6	EC000024 - Installation box for underfloor-installation
ETIM 7	EC000024 - Installation box for underfloor-installation
ETIM 8	EC000024 - Installation box for underfloor-installation
UNSPSC	39121307
WEEE Category	Product Not in WEEE Scope
IDEA Granular Category Code (IGCC)	4432 >> Floor boxes

Categories

Low Voltage Products and Systems → Installation Products → Wire Management and Connectivity → Electrical Boxes

