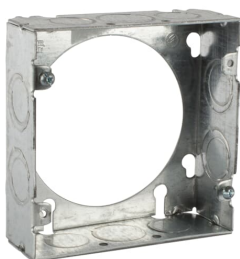


PRODUCT-DETAILS

73151 1234 RD

73151 1/2 & 3/4 PAINTED RED



General Information

Extended Product Type	73151 1234 RD
Product ID	7TAA001590R0022
EAN	0785991048223
Catalog Description	73151 1/2 & 3/4 PAINTED RED
Long Description	Square Box Extension Ring, 29.5 Cubic Inches, 4-11/16 Inches Square x 1-1/2 Inches Deep, 1/2 Inch and 3/4 Inch Knockouts, Red, Pre-Galvanized Steel, Welded Construction, For use with Conduit

Ordering

EAN	0785991048223
UPC	785991048223
Country of Origin	United States (US)
Customs Tariff Number	7326908688
Selling Unit of Measure	each

Container Information

Package Level 1 Units	20 piece
Package Level 1 Width	9.6 in 244 mm
Package Level 1 Height	3.5 in 89 mm
Package Level 1 Depth /	24.2 in

Length	615 mm
Package Level 2 Units	1260 piece

Additional Information

Application	For use with Conduit
Brand / Label	Steel City
Color	Silver
Effective Date	20081015
Material	Steel
Number of Batteries	0
Number of Knockouts	12
Product Name	ELECTRICAL STEEL BOX
Product Type	Extension Rings
Size	4-11/16 Inches Length x 4-11/16 Inches Width x 1-1/2 Inches Depth
Standards	UL E2969
Volume	29.5 in ³

Certificates and Declarations (Document Number)

Data Sheet, Technical Information	73151 1234 RD
Instructions and Manuals	73151 1234 RD

Classifications

ETIM 6	EC000115 - Plaster compensation ring
ETIM 7	EC000115 - Plaster compensation ring
ETIM 8	EC000115 - Plaster compensation ring
UNSPSC	39121320
WEEE Category	Product Not in WEEE Scope
IDEA Granular Category Code (IGCC)	4458 >> Electrical box extension

Categories

Low Voltage Products and Systems → Installation Products → Wire Management and Connectivity → Electrical Boxes

