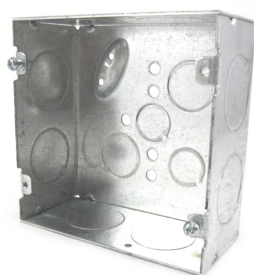


PRODUCT-DETAILS

# 72171 1 CN

## 1CN



### General Information

Extended Product Type	72171 1 CN
Product ID	7TAA001220R0003
EAN	0785991182972
Catalog Description	1CN
Long Description	Square Box, 42 Cubic Inches, 4-11/16 Inches Square x 2-1/8 Inches Deep, 3/4 Inch, and 1 Inch Eccentric Knockouts, Pre-Galvanized Steel, Welded Construction, with Ground Screw, For use with Conduit

### Ordering

EAN	0785991182972
UPC	785991182972
Country of Origin	United States (US)
Customs Tariff Number	7326908688
Selling Unit of Measure	each

### Container Information

Package Level 1 Units	20 piece
Package Level 1 Width	9.6 in 244 mm
Package Level 1 Height	4.7 in 119 mm
Package Level 1 Depth /	24.2 in

Length	615 mm
Package Level 2 Units	1120 piece

### Additional Information

Application	For use with conduit
Brand / Label	Steel City
Color	Silver
Effective Date	19920218
Material	Steel
Number of Batteries	0
Number of Knockouts	13
Product Name	ELECTRICAL STEEL BOX
Product Type	Outlet Boxes
Size	4-11/16 Inches Height x 4-11/16 Inches Width x 2-1/8 Inches depth
Volume	42 in <sup>3</sup>

### Certificates and Declarations (Document Number)

Data Sheet, Technical Information	72171 1 CN
Instructions and Manuals	72171 1 CN

### Classifications

ETIM 6	EC002600 - Box/housing for surface mounting on the wall/ceiling
ETIM 7	EC002600 - Box/housing for surface mounting on the wall/ceiling
ETIM 8	EC002600 - Box/housing for surface mounting on the wall/ceiling
UNSPSC	39121308
WEEE Category	Product Not in WEEE Scope
IDEA Granular Category Code (IGCC)	4438 >> Steel Outlet Boxes

### Categories

Low Voltage Products and Systems → Installation Products → Wire Management and Connectivity → Electrical Boxes

