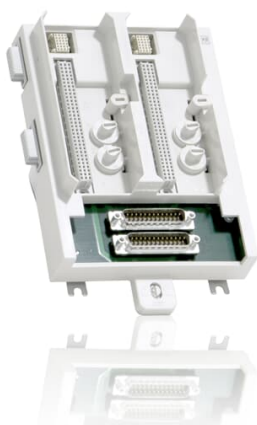


PRODUCT-DETAILS

3BSE069964R1

TU852 MTU, Redundant , 50V



General Information

| | |
|----------------------|---|
| Product ID | 3BSE069964R1 |
| ABB Type Designation | TU852 |
| Catalog Description | TU852 MTU, Redundant , 50V |
| Long Description | Used with redundant I/O. Horizontal DIN rail mounting. With 2x25 pin D-sub connector. |

Additional Information

| | |
|--------------------|---|
| Medium Description | Used with redundant I/O. Horizontal DIN rail mounting. With 2x25 pin D-sub connector. |
| Product Type | Module_Termination_Unit |

Ordering

| | |
|-----------------------|---|
| Country of Origin | Bulgaria (BG) |
| HS Code | 853690-- Electrical apparatus for switching or protecting electrical circuits, or for making connections to or in electrical circuits (for example, switches, relays, fuses, surge suppressors, plugs, sockets, lamp-holders and other connectors, junction boxes), for a voltage not exceeding 1,000 volts; connectors for optical fibres, optical fibre bundles or cables.- Other apparatus |
| Customs Tariff Number | 85369095 |

Dimensions

| | |
|--------------------|----------|
| Product Net Height | 186.5 mm |
| Product Net Width | 124 mm |
| Product Net Weight | 0.55 kg |

Technical

| | |
|---------------------------|-----|
| Number of Input Channels | N/A |
| Number of Output Channels | N/A |

Environmental

| | |
|---------------------|--|
| RoHS Status | Following EU Directive 2011/65/EU |
| WEEE Category | 5. Small Equipment (No External Dimension More Than 50 cm) |
| Number of Batteries | 0 |

Categories

Control System Products → I/O Products → S800 I/O → S800 I/O - Module Termination Units → TU852 Termination Units → TU852 MTU, Redundant

Control Systems → 800xA → I/Os → S800 I/O → S800 I/O 5.1 → I/O Modules

Control Systems → 800xA → System → 800xA System → 800xA 6.0 System → I/O Modules

Control Systems → Compact Product Suite → I/Os → S800 I/O → S800 I/O 5.1 → I/O Modules

Control Systems → Compact Product Suite → I/Os → S800 I/O → S800 I/O 6.0 → I/O Modules

Control Systems → 800xA → I/Os → S800 I/O → S800 I/O 5.0 → I/O Modules

Control Systems → 800xA → I/Os → S800 I/O → S800 I/O 5.1 → I/O Modules

Control Systems → Compact Product Suite → I/Os → S800 I/O → S800 I/O 5.0 → I/O Modules

Control Systems → Compact Product Suite → I/Os → S800 I/O → S800 I/O 5.1 → I/O Modules

