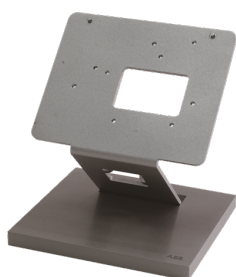


PRODUCT-DETAILS

# 83511-500

## 83511-500 Cavity Wall Set



### General Information

Extended Product Type	83511-500
Product ID	2TMA020130N0021
EAN	6955891807556
Catalog Description	83511-500 Cavity Wall Set
Long Description	For cavity wall mounting of the flush-mounted wall boxes.

### Technical

Product Name	Cavity Wall Set
Suitable For	Outdoor station
Mounting Type	Hollow wall
Material	Plastic
Number of Batteries	0

### Dimensions

Product Net Width	0.08 m
Product Net Height	0.01 m
Product Net Depth / Length	0.12 m
Product Net Weight	0.043 kg

## Container Information

Package Level 1 Units	box 1 set
Package Level 1 Width	0.042 m
Package Level 1 Height	0.074 m
Package Level 1 Depth / Length	0.096 m
Package Level 1 Gross Weight	0.061 kg
Package Level 1 EAN	6955891807556
Package Level 2 Units	box 18 set
Package Level 2 Width	0.202 m
Package Level 2 Height	0.08 m
Package Level 2 Depth / Length	0.392 m
Package Level 2 Gross Weight	1.298 kg

## Ordering

Minimum Order Quantity	1 piece
Customs Tariff Number	85177090
Country of Origin	China (CN)
Selling Unit of Measure	set

## Classifications

ETIM 6	EC001352 - Expansion module for door and video intercom system
ETIM 7	EC001352 - Mounting accessories for door communication
ETIM 8	EC001352 - Mounting accessories for door communication
WEEE Category	Product Not in WEEE Scope
WEEE B2C / B2B	Business To Consumer
CN8	85177090

## Categories

Low Voltage Products and Systems → Home and Building Automation → Door Entry Systems → Welcome → Accessories

