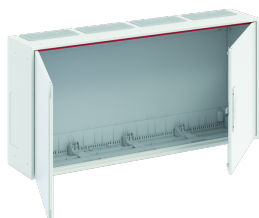


PRODUCT-DETAILS

A43

A43 Wall-mounting cabinet



General Information

Extended Product Type	A43
Product ID	2CPX052013R9999
EAN	4011617520139
Catalog Description	A43 Wall-mounting cabinet
Long Description	Wall-mounting cabinet, empty cabinet, for the internal use, with Door, class of protection II (double insulated), degree of protection IP44, rated current 250 A, powder-coated, in RAL 9016, enclosure out of sheet steel, double door, door out of sheet steel, door opening angle 120 degree, cable entry on top via membrane flange mounted, on side via flange opening pre-punched, dimensions in mm (H x W x D): 500 x 1050 x 215, Grid unit 3 GU, panel width 4, Space units 144, pre-assembled for installation of metering-, modules, Combi-Sets, CombiLine-Module on EDF-mounting frame

Technical

Product Name	Wall-mounting cabinet
Rated Current (I_n)	250 A
Power Loss	$\Delta t = 20K$ 65.8 W $\Delta t = 25K$ 86.9 W $\Delta t = 30K$ 102.6 W
Number of Flange Openings	4
Number of Conduit Inlets	204
Number of Rows	3
Configuration Type	pre-assembled for installation of metering-, modules, Combi-Sets, CombiLine-Module on EDF-mounting frame
Cover Plate Type	Door

Enclosure Type	Wall-mounting cabinet
Mounting Type	Surface mounted/recessed mounted/partially recessed mounted
Door Type	Double
Surface Finishing	powder-coated
Housing Material	Steel plate/plastic
Material	sheet steel
Cover Style	with Notch
DIN Place Units	144
RAL Number	RAL 9016 - Traffic White
Color	Traffic white
Thickness	Cabinet plate 0.9 mm Door plate 0.9 mm

Environmental

Degree of Protection	IP44
Protection Class	Isolated

Dimensions

Width in Number of Modular Spacings	48
Product Net Width	1050 mm
Product Net Height	500 mm
Product Net Depth / Length	215 mm
Product Net Weight	16.458 kg
Built-In Depth (t ₂)	190 mm

Container Information

Package Level 1 Units	pack 1 piece
Package Level 1 Width	1100.000 mm
Package Level 1 Height	560.000 mm
Package Level 1 Depth / Length	233.000 mm
Package Level 1 Gross Weight	17.116 kg
Package Level 1 EAN	4011617520139
Package Level 2 Units	pallet (lift) 10 piece
Package Level 2 Width	1100.000 mm
Package Level 2 Height	1580.000 mm
Package Level 2 Depth / Length	1200.000 mm
Package Level 2 Gross Weight	184.58 kg

Ordering

Minimum Order Quantity	1 piece
Customs Tariff Number	85381000
Country of Origin	Germany (DE)
Selling Unit of Measure	piece

Certificates and Declarations (Document Number)

Declaration of Conformity - CE	9AKK107680A4773
Instructions and Manuals	2CPC133150M5601

Popular Downloads

Data Sheet, Technical Information	2CPC000001C0101 2CPC000002C0101 2CPC000003B0101 2CPC000377C0101
Instructions and Manuals	2CPC133150M5601

Classifications

ETIM 6	EC000058 - Empty cabinet
ETIM 7	EC000058 - Empty cabinet
ETIM 8	EC000058 - Empty cabinet
EPLAN Catalog Tree	Mechanics / Housings / General
WEEE Category	Product Not in WEEE Scope
WEEE B2C / B2B	Business To Consumer
CN8	85381000
Object Classification Code	U

Accessories

Identifier	Description	Type	Quantity	Unit Of Measure
2CPX010487R9999	TZ503 Enclosure accessories	TZ503	1	piece
2CPX010488R9999	TZ504 Enclosure accessories	TZ504	1	piece
2CPX010489R9999	TZ505 Enclosure accessories	TZ505	1	piece
2CPX010490R9999	TZ506 Enclosure accessories	TZ506	1	piece
2CPX010491R9999	TZ507 Enclosure accessories	TZ507	1	piece
2CPX010492R9999	TZ508 Enclosure accessories	TZ508	1	piece
2CPX052340R9999	CTT23 Door	CTT23	1	piece
2CPX052354R9999	CTT23S Door	CTT23S	1	piece
2CPX052375R9999	CTL23S Door	CTL23S	1	piece
2CPX052389R9999	CTW23S Door	CTW23S	1	piece
2CPX052412R9999	CZT2 Accessory door	CZT2	1	piece
2CPX052416R9999	CZT23H Enclosure accessories	CZT23H	1	piece
2CPX052437R9999	CZF3 Flange	CZF3	1	piece
2CPX052438R9999	CZF4 Flange	CZF4	1	piece
2CPX052458R9999	ZK225T Terminals	ZK225T	1	piece
2CPX052459R9999	CZ1P4 Accessory cabinet assembly	CZ1P4	1	piece
2CPX052460R9999	CZ2 Accessory cabinet connection	CZ2	1	piece
2CPX052461R9999	CZ3 Accessory cabinet connection	CZ3	1	piece
2CPX052462R9999	CZ4 Accessory cabinet connection	CZ4	1	piece
2CPX052464R9999	CZ6 Flange	CZ6	1	piece
2CPX052466R9999	CZC4 Copper busbar connection set	CZC4	1	piece
2CPX052488R9999	CZT5 Accessory door	CZT5	1	piece
2CPX052498R9999	CZB213 Interior fitting system	CZB213	1	piece
2CPX052552R9999	CZ11 Interior fitting system	CZ11	1	piece
2CPX052553R9999	CZ12 Accessory cabinet assembly	CZ12	1	piece
2CPX052558R9999	CZ11M Interior fitting system	CZ11M	1	piece
2CPX052559R9999	CZ11P20 Interior fitting system	CZ11P20	1	piece

Categories

Low Voltage Products and Systems → Enclosures → Sub Distribution Boards → Meter Boards → ComfortLine A

Low Voltage Products and Systems → Enclosures → Sub Distribution Boards → Sub Distribution Boards → ComfortLine A

