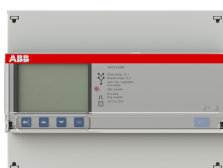


PRODUCT-DETAILS

A44 213-600

A44 213-600 Electricity meter



General Information

| | |
|-----------------------|---|
| Extended Product Type | A44 213-600 |
| Product ID | 2CMA225213R1000 |
| EAN | 8012542252139 |
| Catalog Description | A44 213-600 Electricity meter |
| Long Description | Advanced DIN-rail meter with a large and easy to read back lighted pixel-oriented display. The meter is intended for use in the industry, commercial buildings etc. The meter can be used in 3 or 4 wire systems with a wide voltage range. The meter has several instrumentation values, 25 possible alarms and event logs. Three phase transformer connected for active and reactive energy. Import and export of energy in different registers and one total. One output for pulses or alarm etc. M-Bus communication. Accuracy class 1.0 (or B for MID meters). The meters is IEC approved + MID and METAS approved and verified. |

Technical

| | |
|---------------------|-------------------|
| Product Name | Electricity meter |
| Number of Batteries | 0 |

Environmental

| | |
|-------------|---|
| RoHS Status | Following EU Directive 2002/95/EC August 18, 2005 and amendment |
|-------------|---|

Dimensions

| | |
|----------------------------|----------|
| Product Net Width | 123 mm |
| Product Net Height | 26.5 mm |
| Product Net Depth / Length | 65 mm |
| Product Net Weight | 0.363 kg |

Container Information

| | |
|--------------------------------|---------------|
| Package Level 1 Units | box 1 piece |
| Package Level 1 Width | 98 mm |
| Package Level 1 Height | 68 mm |
| Package Level 1 Depth / Length | 144 mm |
| Package Level 1 Gross Weight | 0.453 kg |
| Package Level 1 EAN | 8012542252139 |

Ordering

| | |
|-------------------------|------------|
| Minimum Order Quantity | 1 piece |
| Customs Tariff Number | 90283019 |
| Country of Origin | Italy (IT) |
| Selling Unit of Measure | piece |

Certificates and Declarations (Document Number)

| | |
|--------------------------------|-----------------------|
| Declaration of Conformity - CE | No declaration needed |
| Instructions and Manuals | 2CMC484003M0201 |
| RoHS Information | 2CMC484006 |

Popular Downloads

| | |
|-----------------------------------|-----------------|
| Data Sheet, Technical Information | 2CMC484001M0201 |
| Instructions and Manuals | 2CMC484003M0201 |

Classifications

| | |
|----------------------------|--|
| ETIM 6 | EC001506 - Kilowatt-hour meter |
| ETIM 7 | EC001506 - Kilowatt-hour meter |
| ETIM 8 | EC001506 - Kilowatt-hour meter |
| WEEE Category | 5. Small Equipment (No External Dimension More Than 50 cm) |
| WEEE B2C / B2B | Business To Consumer |
| CN8 | 90283019 |
| Object Classification Code | P |

Categories

Low Voltage Products and Systems → Modular DIN Rail Products → Energy Efficiency Devices → Energy Meters

