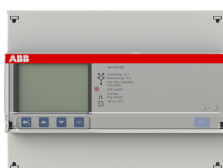


PRODUCT-DETAILS

A44 353-600

A44 353-600 Electricity meter



General Information

Extended Product Type	A44 353-600
Product ID	2CMA224543R1000
EAN	8012542245438
Catalog Description	A44 353-600 Electricity meter

Long Description

Advanced DIN-rail meter with a large and easy to read back lighted pixel-oriented display. The meter is intended for use in the industry, commercial buildings etc. The meter can be used in 3 or 4 wire systems with a wide voltage range. The meter has several instrumentation values, 25 possible alarms and event logs. Three phase transformer connected for active and reactive energy. Import and export of energy in different registers and one total. Resettable register for intermediate values. Up to four tariffs. Two outputs and inputs for pulses or alarm etc. M-Bus communication. Accuracy class 0,5 (or C for MID meters). The meters is IEC approved + MID and METAS approved and verified.

Technical

Product Name	Electricity meter
	0.801 W
Number of Batteries	0

Environmental

RoHS Status	Following EU Directive 2002/95/EC August 18, 2005 and amendment
-------------	---

Dimensions

Product Net Width	123 mm
Product Net Height	26.5 mm
Product Net Depth / Length	65 mm
Product Net Weight	0.363 kg

Container Information

Package Level 1 Units	box 1 piece
Package Level 1 Width	98 mm
Package Level 1 Height	68 mm
Package Level 1 Depth / Length	144 mm
Package Level 1 Gross Weight	0.453 kg
Package Level 1 EAN	8012542245438

Ordering

Minimum Order Quantity	1 piece
Customs Tariff Number	90283019
Country of Origin	Italy (IT)
Selling Unit of Measure	piece

Certificates and Declarations (Document Number)

Declaration of Conformity - CE	No declaration needed
Instructions and Manuals	2CMC484003M0201
RoHS Information	2CMC484006

Popular Downloads

Data Sheet, Technical Information	2CMC484001M0201
Instructions and Manuals	2CMC484003M0201

Classifications

ETIM 6	EC001506 - Kilowatt-hour meter
ETIM 7	EC001506 - Kilowatt-hour meter
ETIM 8	EC001506 - Kilowatt-hour meter
WEEE Category	5. Small Equipment (No External Dimension More Than 50 cm)
WEEE B2C / B2B	Business To Consumer
CN8	90283019
Object Classification Code	P

Categories

Low Voltage Products and Systems → Modular DIN Rail Products → Energy Efficiency Devices → Energy Meters

