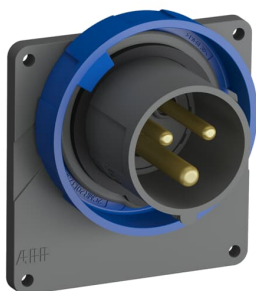


PRODUCT-DETAILS

ABB320B4E

Wall mounted inlets, 2P+E, 4 hour, Yellow, IP67, 20A, 125V, UL/CSA approved and CE compliant, UL/CSA approved and CE compliant



General Information

Extended Product Type	ABB320B4E
Product ID	2CMA104918R1000
EAN	7392696049184
Catalog Description	Wall mounted inlets, 2P+E, 4 hour, Yellow, IP67, 20A, 125V, UL/CSA approved and CE compliant, UL/CSA approved and CE compliant
Long Description	IEC Inlet for 20A and 125V AC 2P3W Clock Position Of , Grounding Contact 4 hour Color code Yellow UL/CSA approved and CE compliant

Ordering

EAN	7392696049184
Country of Origin	Czech Republic (CZ)
Minimum Order Quantity	1 piece

Dimensions

Product Net Width	85 mm
Product Net Height	94 mm
Product Net Weight	0.088 kg

Container Information

Package Level 1 Width	110 mm
Package Level 1 Depth / Length	110 mm
Package Level 1 Height	110 mm
Package Level 1 Gross Weight	0.088 kg
Package Level 1 EAN	7392696056991
Package Level 1 Units	box 1 piece

Environmental

RoHS Status	Following EU Directive 2011/65/EU
-------------	-----------------------------------

Certificates and Declarations (Document Number)

CSA Certificate	2CHC660174X0201
Declaration of Conformity - CE	2CMC700005D0022
Environmental Information	2CMC000056M0000
RoHS Information	2CMC700005D0022
UL Certificate	E109550-19950105
REACH Declaration	2CMC700005D0022

Additional Information

Additional Information	2P+E
Ambient Temperature	-25 ... 40 °C
Cable Cross-Section	1 ... 2.5 mm ²
Cable Diameter	13 ... 21.5 mm
Color	Yellow
Connection Type	Screw
Degree of Protection	IP67
Design	Surface mounted plug
Frequency (f)	50 Hz 60 Hz
Function	Inlet
Housing Material	Plastic (PA)
Invoice Description	Ind. P&S#ABB320B4E
Mounting Holes	75x75
Number of Poles	3
Order Multiple	1 piece
Product Main Type	EBU
Product Name	Panel mounted inlet
Rated Current (I _n)	20 A
Rated Frequency (f)	50 ... 60 Hz
Rated Voltage (U _r)	125 V
Standards	UL 1682, 1686 / CSA C22.2 No. 182.1-13
Suitable for Product Class	IEC Industrial Plugs and Sockets
Instructions and Manuals	2CMC700041M0006
Installation Manual	2CMC700041M0006
RAL Number	RAL 7012 - Basalt Grey

Classifications

eClass	27440519
UNSPSC	39121402

Technical

Wire Size	14 ... 12 AWG
Tightening Torque	WireClamp0.8 N·m

Categories

Low Voltage Products and Systems → Industrial Plugs and Sockets → Easy & Safe → Inlets for Panel Mounting

