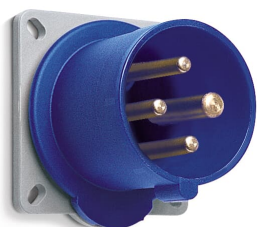

PRODUCT-DETAILS

ABB420B9SP

ABB420B9SP Panel mounted inlet



General Information

Extended Product Type	ABB420B9SP
Product ID	2CMA104728R1000
EAN	7392696047289
Catalog Description	ABB420B9SP Panel mounted inlet
Long Description	IEC Inlet for 20A and 200-250V AC 3P4W, UL/CSA approved and CE compliant

Ordering

EAN	7392696047289
Country of Origin	Czech Republic (CZ)
Minimum Order Quantity	10 piece

Dimensions

Product Net Width	66 mm
Product Net Height	63 mm
Product Net Weight	0.13 kg

Container Information

Package Level 1 Width	158 mm
Package Level 1 Depth / Length	345 mm
Package Level 1 Height	138 mm
Package Level 1 Gross Weight	1.3 kg
Package Level 1 EAN	7392696055093
Package Level 1 Units	box 10 piece

Environmental

RoHS Status	Following EU Directive 2011/65/EU
-------------	-----------------------------------

Certificates and Declarations (Document Number)

CSA Certificate	2CHC660174X0201
Declaration of Conformity - CE	2CMC700005D0022
Environmental Information	2CMC000056M0000
RoHS Information	2CMC700005D0022
UL Certificate	E109550-19950105
REACH Declaration	2CMC700005D0022

Additional Information

Additional Information	3P+E
Ambient Temperature	-25 ... 40 °C
Cable Cross-Section	1.5 ... 4 mm ²
Cable Diameter	13 ... 17 mm
Color	Blue
Connection Type	Screw
Degree of Protection	IP44
Design	Surface mounted plug
Frequency (f)	50 Hz 60 Hz
Function	Inlet
Housing Material	Plastic (PA)
Invoice Description	Ind. P&S#ABB420B9SP
Mounting Holes	51x51
Number of Poles	4
Order Multiple	10 piece
Product Main Type	EB
Product Name	Panel mounted inlet
Rated Current (I _n)	20 A
Rated Frequency (f)	50 ... 60 Hz
Rated Voltage (U _r)	200 ... 250 V
Standards	UL 1682, 1686 / CSA C22.2 No. 182.1-13

Suitable for Product Class	IEC Industrial Plugs and Sockets
Instructions and Manuals	2CMC700041M0005
Installation Manual	2CMC700041M0005
RAL Number	RAL 7012 - Basalt Grey

Classifications

eClass	27440519
UNSPSC	39121402

Technical

Wire Size	14 ... 12 AWG
Tightening Torque	WireClamp0.8 N·m

Categories

Low Voltage Products and Systems → Industrial Plugs and Sockets → Tough & Safe → Inlets for Panel Mounting

