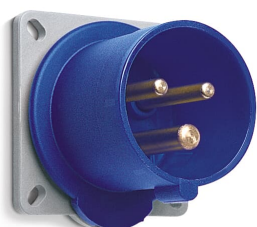


PRODUCT-DETAILS

# ABB316B6SP

Panel mounted inlets, 2P+E, 6 hour, Blue, IP44, 16A, 200 ... 250V, UL/CSA approved and CE compliant



## General Information

Extended Product Type	ABB316B6SP
Product ID	2CMA104722R1000
EAN	7392696047227
Catalog Description	Panel mounted inlets, 2P+E, 6 hour, Blue, IP44, 16A, 200 ... 250V, UL/CSA approved and CE compliant
Long Description	IEC Inlet for 16A and 200-250V AC 2P3W, UL/CSA approved and CE compliant

## Ordering

EAN	7392696047227
Country of Origin	Czech Republic (CZ)
Minimum Order Quantity	10 piece

## Dimensions

Product Net Width	56 mm
Product Net Height	56 mm
Product Net Weight	0.1 kg

---

**Container Information**


---

Package Level 1 Width	138 mm
Package Level 1 Depth / Length	285 mm
Package Level 1 Height	120 mm
Package Level 1 Gross Weight	1 kg
Package Level 1 EAN	7392696055031
Package Level 1 Units	box 10 piece

---

**Environmental**


---

RoHS Status	Following EU Directive 2011/65/EU
-------------	-----------------------------------

---

**Certificates and Declarations (Document Number)**


---

CSA Certificate	2CHC660174X0201
Declaration of Conformity - CE	2CMC700005D0022
Environmental Information	2CMC000056M0000
RoHS Information	2CMC700005D0022
UL Certificate	E109550-19950105
REACH Declaration	2CMC700005D0022

---

**Additional Information**


---

Additional Information	2P+E
Ambient Temperature	-25 ... 40 °C
Cable Cross-Section	1 ... 2.5 mm <sup>2</sup>
Cable Diameter	13 ... 17 mm
Color	Blue
Connection Type	Screw
Degree of Protection	IP44
Design	Surface mounted plug
Frequency (f)	50 Hz 60 Hz
Function	Inlet
Housing Material	Plastic (PA)
Invoice Description	Ind. P&S#ABB316B6SP
Mounting Holes	60x66
Number of Poles	3
Order Multiple	10 piece
Product Main Type	EBU
Product Name	Panel mounted inlet
Rated Current (I <sub>n</sub> )	16 A
Rated Frequency (f)	50 ... 60 Hz
Rated Voltage (U <sub>r</sub> )	200 ... 250 V

Standards	UL 1682, 1686 / CSA C22.2 No. 182.1-13
Suitable for Product Class	IEC Industrial Plugs and Sockets
Instructions and Manuals	2CMC700041M0005
Installation Manual	2CMC700041M0005
RAL Number	RAL 7012 - Basalt Grey

---

## Classifications

eClass	27440519
UNSPSC	39121402

---

## Technical

Wire Size	14 ... 12 AWG
Tightening Torque	WireClamp0.8 N·m

---

## Categories

Low Voltage Products and Systems → Industrial Plugs and Sockets → Easy & Safe → Inlets for Panel Mounting

