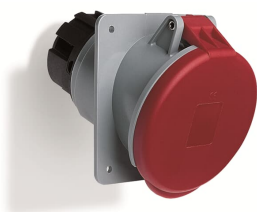


PRODUCT-DETAILS

# ABB560R9

## ABB560R9 Panel mounted socket




---

### General Information

Extended Product Type	ABB560R9
Product ID	2CMA102114R1000
EAN	7392696021142
Catalog Description	ABB560R9 Panel mounted socket
Long Description	IEC Receptacle, 3P+N+E, IP44, 60 A, 120/208 V, UL/CSA approved and CE compliant

---

### Ordering

EAN	7392696021142
Country of Origin	Czech Republic (CZ)
Minimum Order Quantity	1 piece

---

### Dimensions

Product Net Width	98 mm
Product Net Height	110 mm
Product Net Weight	0.7 kg

---

### Container Information

---

Package Level 1 Width	112 mm
Package Level 1 Depth / Length	112 mm
Package Level 1 Height	139 mm
Package Level 1 Gross Weight	0.7 kg
Package Level 1 EAN	7392696021142
Package Level 1 Units	box 1 piece

## Environmental

RoHS Status	Following EU Directive 2011/65/EU
-------------	-----------------------------------

## Certificates and Declarations (Document Number)

Declaration of Conformity - CE	2CMC700005D0022
Environmental Information	2CMC000056M0000
RoHS Information	2CMC700005D0022
UL Certificate	E163435-19950105
REACH Declaration	2CMC700005D0022

## Additional Information

Additional Information	3P+N+E
Ambient Temperature	-25 ... 40 °C
Cable Cross-Section	4 ... 16 mm <sup>2</sup>
Color	Blue
Connection Type	Screw
Degree of Protection	IP44
Frequency (f)	50 Hz 60 Hz
Function	Outlet
Housing Material	Thermoplastic (PBT)
Invoice Description	Ind. P&S#ABB560R9
Mounting Holes	61x61
Number of Poles	5
Order Multiple	1 piece
Product Main Type	TRU
Product Name	Panel mounted socket
Protection Type	Splashproof
Rated Current (I <sub>n</sub> )	60 A
Rated Frequency (f)	50...60 Hz
Rated Voltage (U <sub>r</sub> )	120/208 ... 144/250 V
Recommended Screw Driver	PH2
Standards	EN 61439-1
Suitable for Product Class	IEC Industrial Plugs and Sockets

Instructions and Manuals	2CMC700041M0005
Installation Manual	2CMC700053M0001
RAL Number	RAL 7001 - Silver Grey

---

## Classifications

---

eClass	27440504
UNSPSC	39120000

---

## Categories

---

Low Voltage Products and Systems → Industrial Plugs and Sockets → Tough & Safe → Socket Outlets for Panel Mounting

