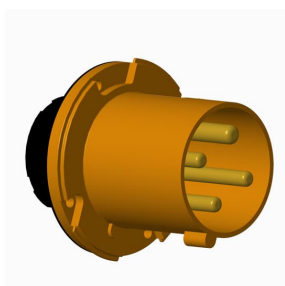


PRODUCT-DETAILS

# ABB460B12

## ABB460B12 Panel mounted inlet



### General Information

Extended Product Type	ABB460B12
Product ID	2CMA102096R1000
EAN	7392696020961
Catalog Description	ABB460B12 Panel mounted inlet
Long Description	Industrial Inlets for Panel Mounting, 3P+E, IP44, 60 A, 125/250V, UL/CSA approved and CE compliant

### Ordering

EAN	7392696020961
Country of Origin	Czech Republic (CZ)
Minimum Order Quantity	1 piece

### Dimensions

Product Net Width	103 mm
Product Net Height	103 mm
Product Net Weight	0.51 kg

---

**Container Information**


---

Package Level 1 Width	112 mm
Package Level 1 Depth / Length	112 mm
Package Level 1 Height	139 mm
Package Level 1 Gross Weight	0.51 kg
Package Level 1 EAN	7392696020961
Package Level 1 Units	box 1 piece

---

**Environmental**


---

RoHS Status	Following EU Directive 2011/65/EU
-------------	-----------------------------------

---

**Certificates and Declarations (Document Number)**


---

CSA Certificate	2CHC660174X0201
Declaration of Conformity - CE	2CMC700005D0022
Environmental Information	2CMC000056M0000
RoHS Information	2CMC700005D0022
UL Certificate	E109550-19950105
REACH Declaration	2CMC700005D0022

---

**Additional Information**


---

Additional Information	3P+E
Ambient Temperature	-25 ... 40 °C
Cable Cross-Section	4 ... 16 mm <sup>2</sup>
Color	Orange
Connection Type	Screw
Degree of Protection	IP44
Design	Surface mounted plug
Frequency (f)	50 Hz 60 Hz
Function	Inlet
Housing Material	Thermoplastic (PBT)
Invoice Description	Ind. P&S#ABB460B12
Mounting Holes	61x61
Number of Poles	4
Order Multiple	1 piece
Product Main Type	TBU
Product Name	Panel mounted inlet
Protection Type	Splashproof
Rated Current ( $I_n$ )	60 A
Rated Frequency (f)	50 ... 60 Hz
Rated Voltage ( $U_r$ )	125/250 V

---

Recommended Screw Driver	PH2
Replacement Product ID (NEW)	2CMA101089R1000
Standards	UL 1682, 1686 / CSA C22.2 No. 182.1-13
Suitable for Product Class	IEC Industrial Plugs and Sockets
Instructions and Manuals	2CMC700041M0005
Installation Manual	2CMC700053M0001
RAL Number	RAL 7001 - Silver Grey

---

## Classifications

eClass	27440519
UNSPSC	39120000

---

## Categories

Low Voltage Products and Systems → Industrial Plugs and Sockets → Tough & Safe → Inlets for Panel Mounting

