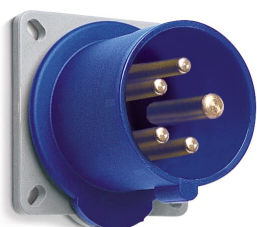


PRODUCT-DETAILS

# ABB520B9W

## ABB520B9W Panel mounted inlet



### General Information

Extended Product Type	ABB520B9W
Product ID	2CMA100462R1000
EAN	7392696004626
Catalog Description	ABB520B9W Panel mounted inlet
Long Description	IEC Inlet 20A 4P5W 3phase-Y 120/208V Clock Position Of Grounding Contact 9 hour Color code Blue, UL/CSA approved and CE compliant

### Ordering

EAN	7392696004626
Country of Origin	Czech Republic (CZ)
Minimum Order Quantity	1 piece

### Dimensions

Product Net Width	87 mm
Product Net Height	87 mm
Product Net Weight	0.21 kg

### Container Information

Package Level 1 Width	110 mm
-----------------------	--------

Package Level 1 Depth / Length	110 mm
Package Level 1 Height	110 mm
Package Level 1 Gross Weight	0.21 kg
Package Level 1 EAN	7392696004626
Package Level 1 Units	box 1 piece
Package Level 2 Width	800 mm
Package Level 2 Depth / Length	1200 mm
Package Level 2 Height	900 mm
Package Level 2 Gross Weight	108.2 kg
Package Level 2 EAN	7392696063920
Package Level 2 Units	pallet (lift) 420 piece

## Environmental

RoHS Status	Following EU Directive 2011/65/EU
-------------	-----------------------------------

## Certificates and Declarations (Document Number)

CSA Certificate	2CHC660174X0201
Declaration of Conformity - CE	2CMC700005D0022
Environmental Information	2CMC000056M0000
RoHS Information	2CMC700005D0022
UL Certificate	E109550-19950105
REACH Declaration	2CMC700005D0022

## Additional Information

Additional Information	3P+N+E
Ambient Temperature	-25 ... 40 °C
Cable Cross-Section	1.5 ... 4 mm <sup>2</sup>
Cable Diameter	13 ... 17 mm
Color	Blue
Connection Type	Screw
Degree of Protection	IP67 IP69
Design	Surface mounted plug
Frequency (f)	50 Hz 60 Hz
Function	Inlet
Housing Material	Thermoplastic (PBT)
Invoice Description	Ind. P&S#ABB520B9W
Mounting Holes	79,5x79,5
Number of Poles	5
Order Multiple	1 piece
Product Main Type	TBAU
Product Name	Panel mounted inlet
Protection Type	Watertight
Rated Current (I <sub>n</sub> )	20 A
Rated Frequency (f)	50 ... 60 Hz

Rated Voltage ( $U_r$ )	120/208 ... 144/250 V
Recommended Screw Driver	PH2
Standards	UL 1682, 1686 / CSA C22.2 No. 182.1-13
Suitable for Product Class	IEC Industrial Plugs and Sockets
Instructions and Manuals	2CMC700052M0001
Installation Manual	2CMC700052M0001
RAL Number	RAL 7001 - Silver Grey

---

## Classifications

eClass	27440519
UNSPSC	39121402

---

## Technical

Wire Size	14 ... 12 AWG
Tightening Torque	WireClamp0.8 N·m

---

## Categories

Low Voltage Products and Systems → Industrial Plugs and Sockets → Tough & Safe → Inlets for Panel Mounting

