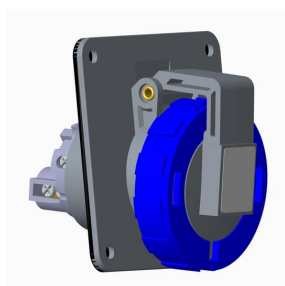


PRODUCT-DETAILS

# ABB430R9W

## ABB430R9W Panel mounted socket



### General Information

Extended Product Type	ABB430R9W
Product ID	2CMA100449R1000
EAN	7392696004497
Catalog Description	ABB430R9W Panel mounted socket
Long Description	IEC Receptacle 30A 3P4W 3phase 250V Clock Position Of Grounding Contact 9 hour Color code Blue, UL/CSA approved and CE compliant

### Ordering

EAN	7392696004497
Country of Origin	Czech Republic (CZ)
Minimum Order Quantity	1 piece

### Dimensions

Product Net Width	102 mm
Product Net Height	110 mm
Product Net Weight	0.21 kg

---

**Container Information**


---

Package Level 1 Width	110 mm
Package Level 1 Depth / Length	110 mm
Package Level 1 Height	110 mm
Package Level 1 Gross Weight	0.21 kg
Package Level 1 EAN	7392696004497
Package Level 1 Units	box 1 piece
Package Level 2 Width	800 mm
Package Level 2 Depth / Length	1200 mm
Package Level 2 Height	900 mm
Package Level 2 Gross Weight	108.2 kg
Package Level 2 EAN	7392696063890
Package Level 2 Units	pallet (lift) 420 piece

---



---

**Environmental**


---

RoHS Status	Following EU Directive 2011/65/EU
-------------	-----------------------------------

---



---

**Certificates and Declarations (Document Number)**


---

CSA Certificate	2CHC660175X0201
Declaration of Conformity - CE	2CMC700005D0022
Environmental Information	2CMC000056M0000
RoHS Information	2CMC700005D0022
UL Certificate	E163435-19950105
REACH Declaration	2CMC700005D0022

---



---

**Additional Information**


---

Additional Information	3P+E
Ambient Temperature	-25 ... 40 °C
Cable Cross-Section	2.5 ... 10 mm <sup>2</sup>
Cable Diameter	13 ... 21.5 mm
Color	Blue
Connection Type	Screw
Degree of Protection	IP67 IP69
Frequency (f)	50 Hz 60 Hz
Function	Receptacle
Housing Material	Thermoplastic (PBT)
Invoice Description	Ind. P&S#ABB430R9W
Mounting Holes	79.5x79.5

Mounting Type	unified flange, angled
Number of Poles	4
Order Multiple	1 piece
Product Main Type	TRAU
Product Name	Panel mounted socket
Protection Type	Watertight
Rated Current ( $I_n$ )	30 A
Rated Frequency (f)	50...60 Hz
Rated Voltage ( $U_r$ )	200 ... 250 V
Recommended Screw Driver	PH2
Standards	UL 1682, 1686 / CSA C22.2 No. 182.1-13
Suitable for Product Class	IEC Industrial Plugs and Sockets
Instructions and Manuals	2CMC700052M0001
Installation Manual	2CMC700052M0001
RAL Number	RAL 7001 - Silver Grey

## Classifications

eClass	27440504
UNSPSC	39121406

## Technical

Wire Size	12 ... 10 AWG
Tightening Torque	WireClamp1.2 N·m

## Categories

Low Voltage Products and Systems → Industrial Plugs and Sockets → Tough & Safe → Socket Outlets for Panel Mounting

