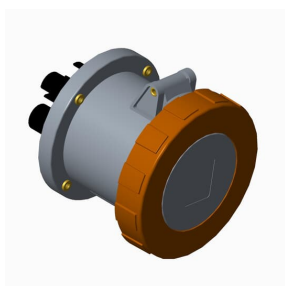


PRODUCT-DETAILS

ABB4100R12W

ABB4100R12W Panel mounted socket



General Information

Extended Product Type	ABB4100R12W
Product ID	2CMA100421R1000
EAN	7392696004213
Catalog Description	ABB4100R12W Panel mounted socket
Long Description	IEC Receptacle 100A 3P4W 125/250V Clock Position Of Grounding Contact 12 hour Color code Orange, UL/CSA approved and CE compliant

Ordering

EAN	7392696004213
Country of Origin	Czech Republic (CZ)
Minimum Order Quantity	1 piece

Dimensions

Product Net Width	135 mm
Product Net Height	200 mm
Product Net Weight	1.14 kg

Container Information

Package Level 1 Width	135 mm
Package Level 1 Depth / Length	140 mm
Package Level 1 Height	200 mm
Package Level 1 Gross Weight	0.82 kg
Package Level 1 EAN	7392696004213
Package Level 1 Units	box 1 piece
Package Level 2 Width	800 mm
Package Level 2 Depth / Length	1200 mm
Package Level 2 Height	900 mm
Package Level 2 Gross Weight	162.68 kg
Package Level 2 EAN	7392696063296
Package Level 2 Units	pallet (lift) 174 piece

Environmental

RoHS Status	Following EU Directive 2011/65/EU
-------------	-----------------------------------

Certificates and Declarations (Document Number)

CSA Certificate	2CHC660175X0201
Declaration of Conformity - CE	2CMC700005D0022
Environmental Information	2CMC000056M0000
RoHS Information	2CMC700005D0022
UL Certificate	E163435-19950105
REACH Declaration	2CMC700005D0022

Additional Information

Additional Information	3P+E
Ambient Temperature	-25 ... 40 °C
Cable Cross-Section	16 ... 70 mm ²
Color	Orange
Connection Type	Screw
Degree of Protection	IP67 IP69
Frequency (f)	50 Hz 60 Hz
Function	Receptacle
Housing Material	Thermoplastic (PBT)
Invoice Description	Ind. P&S#ABB4100R12W
Mounting Holes	71x71
Number of Poles	4

Order Multiple	1 piece
Product Main Type	TRU
Product Name	Panel mounted socket
Protection Type	Watertight
Rated Current (I_n)	100 A
Rated Frequency (f)	50...60 Hz
Rated Voltage (U_r)	125 ... 250 V
Recommended Screw Driver	PH2
Standards	UL 1682, 1686 / CSA C22.2 No. 182.1-13
Suitable for Product Class	IEC Industrial Plugs and Sockets
Instructions and Manuals	2CMC700052M0001
Installation Manual	2CMC700052M0001
RAL Number	RAL 7001 - Silver Grey

Classifications

eClass	27440504
UNSPSC	39121406

Categories

Low Voltage Products and Systems → Industrial Plugs and Sockets → Tough & Safe → Socket Outlets for Panel Mounting

