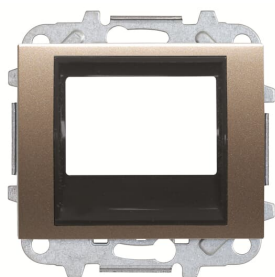


PRODUCT-DETAILS

8468 CS

8468 CS Cover radio/ampl 2M



General Information

Extended Product Type	8468 CS
Product ID	2CLA846800A1101
EAN	8427238104409
Catalog Description	8468 CS Cover radio/ampl 2M
Long Description	Cover plate for modules ref. 9368 and 9368.1

Technical

Product Name	Cover radio/ampl 2M
Application	Radio receiver
Type of Fastening	Screw
Surface Finishing	Decor Matt
Material	Metal
Legend	None
Model Number	Central cover plate
Color	Bronze

Environmental

Ambient Air Temperature	Operation -5 ... +35 °C Storage -5 ... +50 °C
Degree of Protection	IP20

Dimensions

Product Net Width	0.073 m
Product Net Height	0.033 m
Product Net Depth / Length	0.073 m
Product Net Weight	0.018 kg

Container Information

Package Level 1 Units	box 1 piece
Package Level 1 Width	0.073 m
Package Level 1 Height	0.033 m
Package Level 1 Depth / Length	0.073 m
Package Level 1 Gross Weight	0.018 kg
Package Level 1 EAN	8427238104409

Ordering

Minimum Order Quantity	1 piece
Customs Tariff Number	85389099
Country of Origin	Spain (ES)
Selling Unit of Measure	piece

Certificates and Declarations (Document Number)

Declaration of Conformity - CE	No declaration needed
Instructions and Manuals	2CLX840009A1001

Popular Downloads

Data Sheet, Technical Information	No document needed
Instructions and Manuals	2CLX840009A1001

Classifications

ETIM 6	EC000011 - Control element/cover plate for domestic switching devices
ETIM 7	EC000011 - Control element/cover plate for domestic switching devices
ETIM 8	EC000011 - Control element/cover plate for domestic switching devices
WEEE Category	Product Not in WEEE Scope

Categories

Low Voltage Products and Systems → Switch Assortments → Flush Mounted VDE Range - Niessen → Design Olas → CoverPlates (partly incl. Insert) → Multimedia Devices

Low Voltage Products and Systems → Switch Assortments → Multimedia Devices → Multimedia Devices → Multimedia Devices - Flush Mounted → Multimedia Devices

