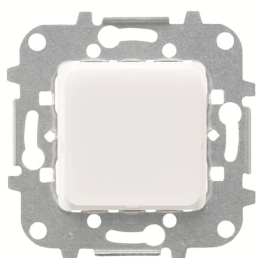


PRODUCT-DETAILS

8180.2

8180.2 LED DND/MUR signaling light



General Information

Extended Product Type	8180.2
Product ID	2CLA818020A1001
EAN	8427238063201
Catalog Description	8180.2 LED DND/MUR signaling light
Long Description	Rated voltage: 127-230 Vac / 50-60 Hz Lamp: red/green LED Luminous flux: > 2 lumen at 1 meter Without fixing claws Cover plate code: 8581 without pictogram or 8581.XX with pictogram, 8481 (optional 8481.1 pictograms), 8281 (optional 8281.1 pictograms) & 5581 (optional 5581.1 pictograms)

Technical

Product Name	LED DND/MUR signaling light
Rated Voltage (U _r)	230 V
Lamp Type	LED not exchangeable
Mounting Type	Flush mounted (plaster)
Type of Fastening	Screw
Surface Finishing	Surface protection: Untreated Surface finishing: Matt
Material	Plastic
Color	Clear
Lamp Color	Red / Green
Number of Batteries	0

Environmental

Ambient Air Temperature	Operation -5 ... +35 °C Storage -5 ... +50 °C
Degree of Protection	IP20

Dimensions

Product Net Width	0.073 m
Product Net Height	0.052 m
Product Net Depth / Length	0.073 m
Product Net Weight	0.072 kg
Built-In Depth (t ₂)	40 mm

Container Information

Package Level 1 Units	box 1 piece
Package Level 1 Width	0.073 m
Package Level 1 Height	0.052 m
Package Level 1 Depth / Length	0.073 m
Package Level 1 Gross Weight	0.072 kg
Package Level 1 EAN	8427238063201

Ordering

Minimum Order Quantity	1 piece
Customs Tariff Number	85365080
Country of Origin	Spain (ES)
Selling Unit of Measure	piece

Certificates and Declarations (Document Number)

Declaration of Conformity - CE	No declaration needed
Instructions and Manuals	2CLX818019A1001

Popular Downloads

Data Sheet, Technical Information	9AKK107046A0356
Instructions and Manuals	2CLX818019A1001

Classifications

ETIM 6	EC000064 - Information light signal for domestic switching devices
ETIM 7	EC000064 - Information light signal for domestic switching devices
ETIM 8	EC000064 - Information light signal for domestic switching devices
WEEE Category	5. Small Equipment (No External Dimension More Than 50 cm)
WEEE B2C / B2B	Business To Consumer
CN8	85365080

Categories

Low Voltage Products and Systems → Switch Assortments → Flush Mounted VDE Range - Niessen → Design Arco → Flush Mounted Inserts → LED Light / Light Signal Inserts

Low Voltage Products and Systems → Switch Assortments → Flush Mounted VDE Range - Niessen → Design Olas → Flush Mounted Inserts → LED Light / Light Signal Inserts

Low Voltage Products and Systems → Switch Assortments → Flush Mounted VDE Range - Niessen → Design Sky → Flush Mounted Inserts → LED Light / Light Signal Inserts

Low Voltage Products and Systems → Switch Assortments → Flush Mounted VDE Range - Niessen → Design Tacto → Flush Mounted Inserts → LED Light / Light Signal Inserts

Low Voltage Products and Systems → Switch Assortments → LED Light / Light Signals → LED Light / Light Signal → LED Light / Light Signal - Flush Mounted → LED Light / Light Signal Inserts

