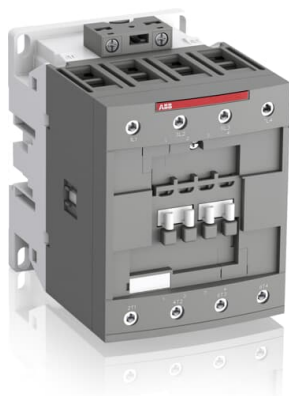


PRODUCT-DETAILS

# AF80-40-00-14

## AF80-40-00-14 250-500V50/60HZ-DC Contactor



### General Information

Extended Product Type	AF80-40-00-14
Product ID	1SBL397201R1400
EAN	3471523133747
Catalog Description	AF80-40-00-14 250-500V50/60HZ-DC Contactor
Long Description	The AF80-40-00-14 is a 4 pole - 1000 V IEC or 600 UL contactor with screw terminals, controlling motors up to 37 kW / 400 V AC (AC-3) and switching power circuits up to 125 A (AC-1) or 105 A UL general use. Thanks to the AF technology, the contactor has a wide control voltage range (250-500 V 50/60 Hz and DC), managing large control voltage variations, reducing panel energy consumptions and ensuring distinct operations in unstable networks. Furthermore, surge protection is built-in, offering a compact solution. AF contactors have a block type design, can be easily extended with add-on auxiliary contact blocks and an additional wide range of accessories.

### Ordering

Minimum Order Quantity	1 piece
Customs Tariff Number	85364900

### Popular Downloads

Instructions and Manuals	1SBC101047M6801
--------------------------	-----------------

### Dimensions

Product Net Width	90 mm
Product Net Depth / Length	116 mm
Product Net Height	125.5 mm
Product Net Weight	1.44 kg

## Technical

Number of Main Contacts NO	4
Number of Main Contacts NC	0
Number of Auxiliary Contacts NO	0
Number of Auxiliary Contacts NC	0
Rated Operational Voltage	Main Circuit 1000 V
Rated Frequency (f)	Main Circuit 50 / 60 Hz
Conventional Free-air Thermal Current (I <sub>th</sub> )	acc. to IEC 60947-4-1, Open Contactors q = 40 °C 125 A
Rated Operational Current AC-1 (I <sub>e</sub> )	(690 V) 40 °C 125 A (690 V) 60 °C 105 A (690 V) 70 °C 90 A
Rated Operational Current AC-3 (I <sub>e</sub> )	(415 V) 60 °C 80 A (440 V) 60 °C 80 A (500 V) 60 °C 65 A (690 V) 60 °C 49 A (1000 V) 60 °C 25 A (380 / 400 V) 60 °C 80 A (220 / 230 / 240 V) 60 °C 80 A
Rated Operational Power AC-3 (P <sub>e</sub> )	(415 V) 45 kW (440 V) 45 kW (500 V) 45 kW (690 V) 45 kW (1000 V) 35 kW (380 / 400 V) 37 kW (220 / 230 / 240 V) 22 kW
Rated Short-time Withstand Current Low Voltage (I <sub>cw</sub> )	at 40 °C Ambient Temp, in Free Air, from a Cold State 10 s 780 A at 40 °C Ambient Temp, in Free Air, from a Cold State 15 min 140 A at 40 °C Ambient Temp, in Free Air, from a Cold State 1 min 300 A at 40 °C Ambient Temp, in Free Air, from a Cold State 1 s 1200 A at 40 °C Ambient Temp, in Free Air, from a Cold State 30 s 450 A for 1 s -empty- A
Maximum Breaking Capacity	cos phi=0.45 (cos phi=0.35 for I <sub>e</sub> > 100 A) at 440 V 1150 A cos phi=0.45 (cos phi=0.35 for I <sub>e</sub> > 100 A) at 690 V 750 A
Maximum Electrical Switching Frequency	(AC-1) 600 cycles per hour
Rated Insulation Voltage (U <sub>i</sub> )	acc. to IEC 60947-4-1 and VDE 0110 (Gr. C) 1000 V acc. to UL/CSA 600 V
Rated Impulse Withstand Voltage (U <sub>imp</sub> )	8 kV
Maximum Mechanical Switching Frequency	3600 cycles per hour
Rated Control Circuit Voltage (U <sub>c</sub> )	50 Hz 250 ... 500 V 50 Hz / 60 Hz 250 ... 500 V 60 Hz 250 ... 500 V DC Operation 250 ... 500 V
Connecting Capacity Main Circuit	Flexible with Ferrule 1/2x 6 ... 50 mm <sup>2</sup> Rigid 1x 6 ... 70 mm <sup>2</sup> Rigid 2x 6 ... 50 mm <sup>2</sup>
Connecting Capacity Control Circuit	Flexible with Ferrule 1/2x 0.75 ... 2.5 mm <sup>2</sup> Rigid 1/2x 1 ... 2.5 mm <sup>2</sup>
Wire Stripping Length	Main Circuit 17 mm
Degree of Protection	acc. to IEC 60529, IEC 60947-1, EN 60529 Coil Terminals IP20

acc. to IEC 60529, IEC 60947-1, EN 60529 Main Terminals IP10

Terminal Type Screw Terminals

**Technical UL/CSA**

General Use Rating UL/CSA	(600 V AC) 105 A
Horsepower Rating UL/CSA	(120 V AC) Single Phase 7-1/2 hp (200 ... 208 V AC) Three Phase 25 hp (220 ... 240 V AC) Three Phase 30 hp (240 V AC) Single Phase 15 hp (440 ... 480 V AC) Three Phase 60 hp (550 ... 600 V AC) Three Phase 75 hp

**Environmental**

Ambient Air Temperature	Close to Contactor for Storage -60 ... +80 °C Near Contactor for Operation in Free Air -40 ... 70 °C
Climatic Withstand	Category B according to IEC 60947-1 Annex Q
Maximum Operating Altitude Permissible	Without Derating 3000 m
Resistance to Vibrations acc. to IEC 60068-2-6	5 ... 300 Hz 3 g Closed position / 2 g Open position
RoHS Status	Following EU Directive 2011/65/EU

**Certificates and Declarations (Document Number)**

ABS Certificate	ABS_15-GE1349500-PDA_90682247
BV Certificate	BV_2634H36994A
CB Certificate	CB_SE-96557M2
CCC Certificate	CCC_2013010304646569
CQC Certificate	CQC2013010304646569
Declaration of Conformity - CCC	2020980304001255
Declaration of Conformity - CE	1SBD250001U1000
DNV Certificate	DNV-GL_TAE00001AF-3
DNV GL Certificate	DNV-GL_TAE00001AF-3
EAC Certificate	EAC_RU_FRME77B03447
GL Certificate	DNV-GL_TAE00001AF-3
Instructions and Manuals	1SBC101047M6801
KC Certificate	KC_HW02016-15013C
LR Certificate	LR5_1300087E1
RMRS Certificate	RMRS_1400682124
RoHS Information	1SBD250001U1000
UL Certificate	UL_20141124-E312527-14-2
UL Listing Card	UL_E312527

**Container Information**

Package Level 1 Units	box 1 piece
Package Level 1 Width	150 mm
Package Level 1 Depth / Length	150 mm
Package Level 1 Height	103 mm
Package Level 1 Gross Weight	1.57 kg
Package Level 1 EAN	3471523133747

Package Level 2 Units	box 8 piece
Package Level 2 Width	250 mm
Package Level 2 Depth / Length	300 mm
Package Level 2 Height	300 mm
Package Level 2 Gross Weight	12.56 kg
Package Level 3 Units	192 piece

## Classifications

Object Classification Code		Q
ETIM 4	EC000066 - Magnet contactor, AC-switching	
ETIM 5	EC000066 - Magnet contactor, AC-switching	
ETIM 6	EC000066 - Power contactor, AC switching	
ETIM 7	EC000066 - Power contactor, AC switching	
eClass		V11.0 : 27371003
UNSPSC		39121529
E-Number (Finland)		3707461
E-Number (Sweden)		3210316

## Categories

Low Voltage Products and Systems → Control Products → Contactors → Block Contactors

